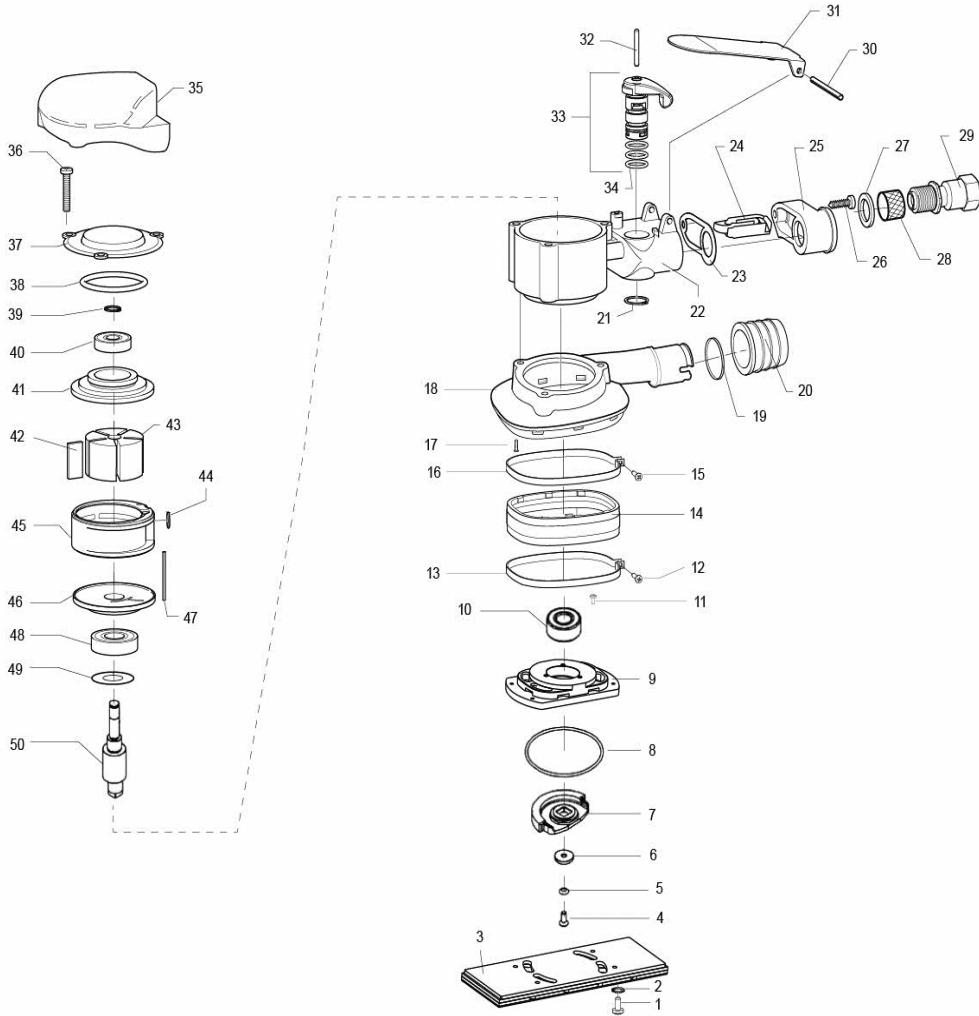


LEVIGATRICE ORBITALE PNEUMATICA CON ASPIRAZIONE PNEUMATIC ORBITAL SANDER WITH DUST EXTRACTION

RE21ALN



ID	ITEM	DESCRIPTION
001	9.624	SCREW M4 x 10 T.C.C. BURNISHED
002	9.252	STEEL WASHER d 7,6x4,4 s1,8 autobl. NL4D AK150
003	988.001MH	MULTIHOLE PLATE 70x198mm
004	9.612	SCREW M4 x 10 T.G.S. BURNISHED
005	9.329	TOOTHED WASHER
006	54.361	RE21ALN FIXING WASHER NEW COUNTERWEIGHT
007	57.361	RE21ALN COUNTERWEIGHT ZAMA
008	9.2027	ANELLO OR Ø 2 x Ø 60 GOMMA NBR
009	61.361	RE21ALN BASE PLATE
010	9.189/10	CUSC. DOPPIA CORONA 3001 12-28-12
011	9.832	SCREW M3 x 6 TC + FL BURNISHED
012	9.551	SCREW 2,9x13 (4x1/2") T.C.C.
013	64.190	HOSE CLAMP
014	65.180	VACUUM RING
015	9.551	SCREW 2,9x13 (4x1/2") T.C.C.
016	64.265	HOSE CLAMP
017	9.614	SCRE M4 x 12 T.C.C. d7,7 BRN 8.8
018	33.180	SUCTION FLANGE
019	9.509	O-RING 2087
020	663.033	FILLER CONNECTOR
021	9.103	SEEGER d 12 TIPO E DIN 471 CR3 PHOSPHATE
023	421.175	RA75 / RA150A GASKET
024	662.175	POLYETHYLENE SILENCER RA-RE-RS
025	42.176	TERMINALE RA75
026	9.664	SCREW 3,9x19 (7x3/4") T.C.C.
027	9.246	STEEL WASHER d18,8 x 14,2 s 0,3
028	422.182	GRID TO DISRUPT THE AIR-FLOW RA150
029	43.182	CONNECTION FOR AIR ENTRY RA150A - RA125A
030	9.515	ELASTIC PLUG 3x40 DIN 1481 RA150A
031	38.175	LEVER
032	9.2008	ROLL d 3 x23,8
033	291.182/C	VALVE BODY
034	9.32	O-RING
035	81.175	RUBBER CAP
036	9.623	SCREW M4 x 25 T.C.C.BURNISHED
037	35.175	COVER
038	9.496	O-RING 44x3 TA541A
039	9.111	SEEGER d 8 DIN 471
040	9.145/10	BEARING NSK 608 ZZ 1MC5E ENSS
041	28.182	UPPER HEAD
042	181.175/C6/10	VANES RA/RE/RS 10pcs.
043	1.182	ROTOR
044	9.2001	O-RING 2031
045	21.175	MOTER CYLINDER
046	27.182	LOWER HEAD
047	9.4705	ROLL d 3 x29,8
048	9.96/10	BEARING NSK 6001 DDUUM J EA3SZ
049	9.306	STEEL WASHER d18 x 12,3 s 0,3
050	51.361	RE21ALN ROTOR SHAFT